

**IRWIN®**

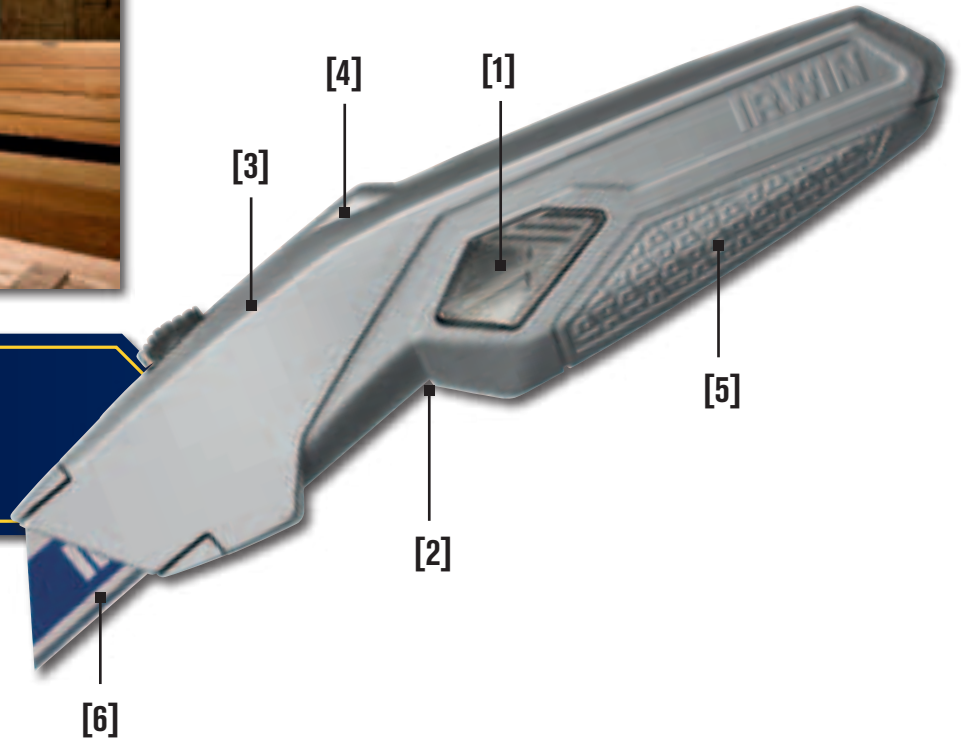
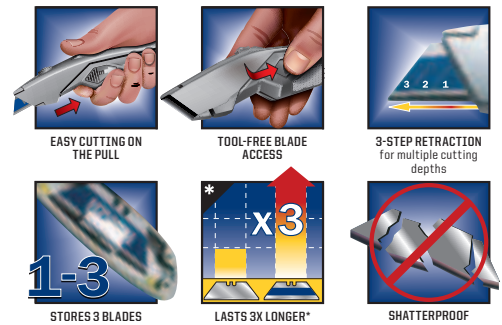
Utility Knives & Blades

# GENERAL CONSTRUCTION UTILITY KNIFE



### GENERAL CONSTRUCTION RETRACTABLE TRAPEZOID KNIFE

A lightweight and durable retractable knife to get all jobs done. The push and slide opening mechanism provides easy tool-free blade access – for quick blade changes. A solid and durable knife with secure parts – to prevent dropping/losing components and a blade housing that makes cleaning of debris after use very easy.



### IRWIN GENCON UTILITY KNIFE FEATURES

1. **PUSH AND SLIDE OPENING**  
for Tool-free Access
2. **TRIGGER GRIP**  
for cutting on the pull
3. **DURABLE DESIGN -**  
to get the job done
4. **SECURE PARTS -**  
To prevent dropping/losing components
5. **REMOVABLE BLADE HOUSING -**  
For cleaning debris after use
6. **BI-METAL BLADE:**  
3X Longer Life\*

ITEM NO.	DESCRIPTION	EAN	SHELF PACK
10508105	IR GENERAL CONTRACTOR UTILITY	5706915081053	5

\*versus traditional IRWIN carbon blades